

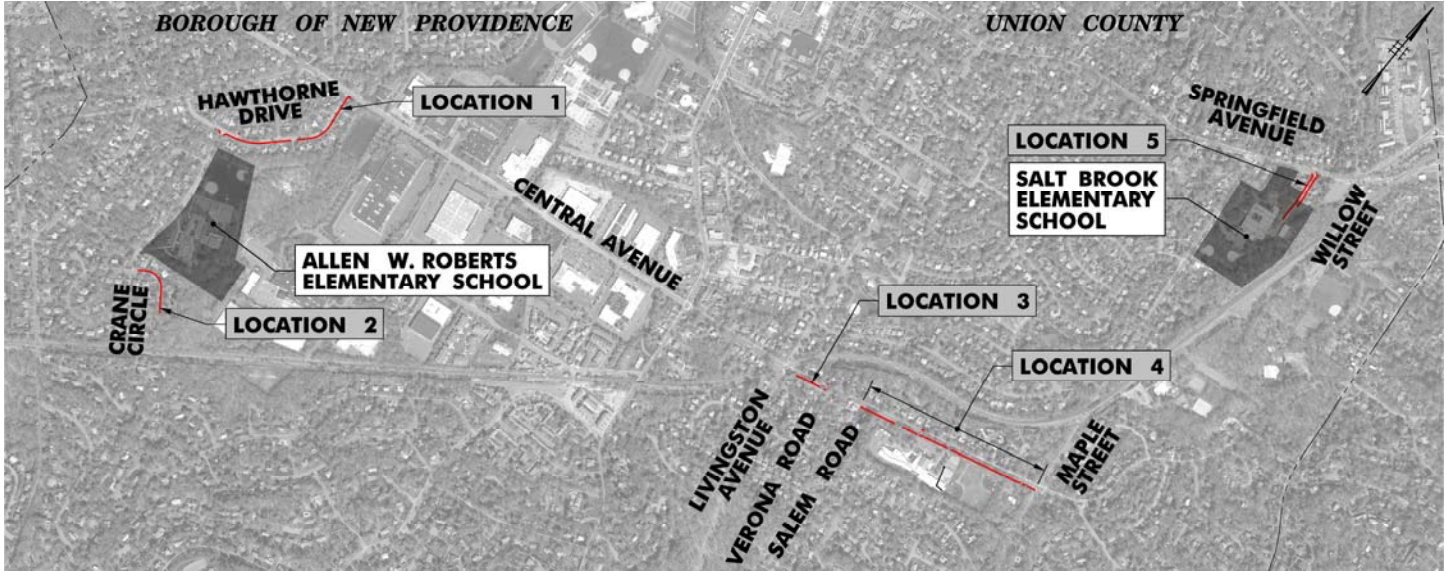
SRS-2016 - Various Sidewalk Improvements
NJDOT Safe Routes to School Program (SRTS)
Borough of New Providence, Union County, New Jersey

Final Design Phase • In-Person Public Information Center

New Providence Municipal Court

360 Elkwood Ave, New Providence, NJ 07974

Thursday, January 25, 2024 from 6:00 PM – 8:00 PM (Snow Date: Tuesday, January 30, 2024)



The Borough of New Providence will hold a **Public Information Center (PIC)** to provide local residents and businesses with information on the **SRS-2016 - Various Sidewalk Improvements** project. You are encouraged to actively participate by providing comments at the meeting, by mail, or by e-mail.

THE MEETING

The purpose of the meeting is to provide an opportunity for input on the project. The Public Information Center will be held in-person at:

New Providence Municipal Court
360 Elkwood Ave, New Providence, NJ 07974
Thursday, January 25, 2024

From 6:00 PM to 8:00 PM

(Snow Date: Tuesday, January 30, 2024

**from 6:00PM to 8:00PM. If snow date is needed, will be
posted on Borough Website)**

You will have an opportunity to review exhibits, ask questions and discuss any concerns. Property owners with rental units are advised that tenants are also invited and encouraged to participate. If you are unable to participate or want to provide comments after the meeting, please visit the Borough's website for information about the project and provide comments by **February 13, 2024**.

<https://www.newprov.org/>

PROJECT BACKGROUND

The purpose of this project is to construct segments of sidewalk, curb ramps, driveway aprons and crosswalks in the vicinity of Allen W. Roberts Elementary School and Salt Brook Elementary School within New Providence Borough. The project Design and Construction cost is funded by federal funds administered through NJDOT Local Aid Safe Routes to School (SRTS) Program.

PROPOSED PROJECT LIMITS AND IMPROVEMENTS

- Allen W. Roberts Elementary School
 - 1 Hawthorne Drive from Cameron Rd. to Central Ave.
 - New segment of concrete sidewalk, seven (7) curb ramps and eighteen (18) driveway aprons
 - 2 Crane Circle from Jones Dr. to Morris Ave.
 - New segment of concrete sidewalk, two (2) curb ramps and five (5) driveway aprons
- Salt Brook Elementary School
 - 3 Central Avenue from Livingston Ave. to Verona Rd.
 - New segment of concrete sidewalk, two (2) curb ramps, three (3) driveway aprons, new crosswalk (Verona Rd.), and relocation of Central Ave. crossing
 - 4 Central Avenue from Salem Rd. to Maple St.
 - New segment of concrete sidewalk, twelve (12) curb ramps, two (2) driveway aprons, relocated Central Ave. crossing at Salem Rd., and new crosswalks
 - 5 Willow Street from Springfield Ave. to southern terminus (direct access to Salt Brook Elementary School)
 - New segments of concrete sidewalk, three (3) curb ramps, two (2) driveway aprons, new crosswalks

ANTICIPATED PROJECT SCHEDULE:

Design Phase Completed: Spring 2024

Construction: 2024 or Spring 2025

For further information or to submit comments, please contact:

Bernadette C. Cuccaro
New Providence Borough Administrator
360 Elkwood Avenue
New Providence, NJ 07974
P: 908-665-1400
E: bcuccaro@newprov.us